



Website <http://biz.lgservice.com>

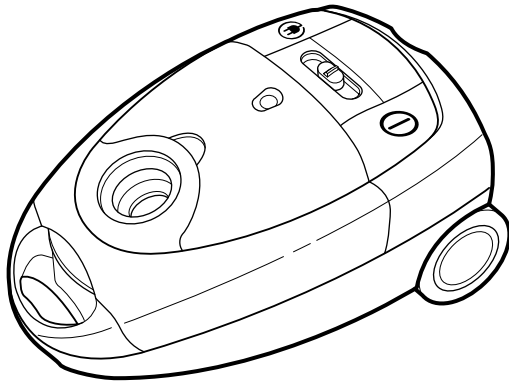
VACUUM CLEANER

SERVICE MANUAL

MODEL : V-4800HTV

CAUTION

BEFORE SERVICING THE UNIT, READ THE
"SAFETY PRECAUTIONS" IN THIS MANUAL.



P/NO : 3828Fi5719N

January, 2009
Printed in Korea

CONTENTS

SAFETY PRECAUTIONS.....	3
CAUTIONS	3
DESCRIPTION.....	4
SPECIFICATIONS	4
DISASSEMBLY	5~6
TROUBLE SHOOTING	7~9
SCHEMATIC DIAGRAM.....	10
PRINTED CIRCUIT BOARD	10
EXPLODED VIEW	11~13
REPLACEMENT PARTS LIST.....	14~15

SAFETY PRECAUTIONS

BEFORE OPERATING THIS VACUUM CLEANER, READ THIS SERVICE MANUAL THOROUGHLY, AND OBSERVE EACH POINT CAREFULLY.

1. Filter

- 1) The filter is composed of a motor safety filter, a exhaust filter and a paper bag or a cloth bag..
- 2) Never use the vacuum cleaner without filters. It may harm the motor.
- 3) When the cloth bag, the motor safety filter and the exhaust filter are soiled, wash the filter with neutral cleanser.

NOTE : Re-use of the cloth bag, motor safety filter.

- Never wash the filter in a washing machine or in a dishwasher.
- Never use hot water for washing the filter.
- Re-use the filter after drying it completely in the shade.
- Do not dry near fire or direct sun ray.

2. Dust indicator

When the dust bag is full of dust, the indicator turns to red (Suction power will be reduced). Then, change the paper bag with the new one or clean the cloth bag.

3. Avoid sucking such materials as:

- 1) Liquid or wet dust :
Clogs the ventilation holes, reduces the suction power significantly and harms the motor.
- 2) Inflammable liquids such as benzene, alcohol or solvents.
- 3) Burning objects such as cigarette butts.
- 4) Bulky objects such as vinyl, paper etc.
- 5) Sharp objects such as needles, pins, metal or glass particles etc.

4. Attachments

- Nozzle : for cleaning wooden floor, the room floor and carpet.
- Crevice Tool : for cleaning any crevice, inside corners of window frames. (However, do not use the crevice tool more than 20 minutes.)
- Dusting Brush : for delicate vacuuming of fabrics on the furniture, curtains, etc.
- Upholstery Nozzle : for vacuuming the dust on the upholstery.

5. Close supervision is necessary when this vacuum cleaner is used by or near children. Children's carelessness may cause damage to the cleaner or injure persons.

6. Air exhausted from the vacuum cleaner is normally warm. But if extraordinarily hot air is exhausted, check if the telescopic tube, hose or dust bag is clogged or not.

7. Electric shock could occur if used outdoors or on wet surfaces.

CAUTIONS

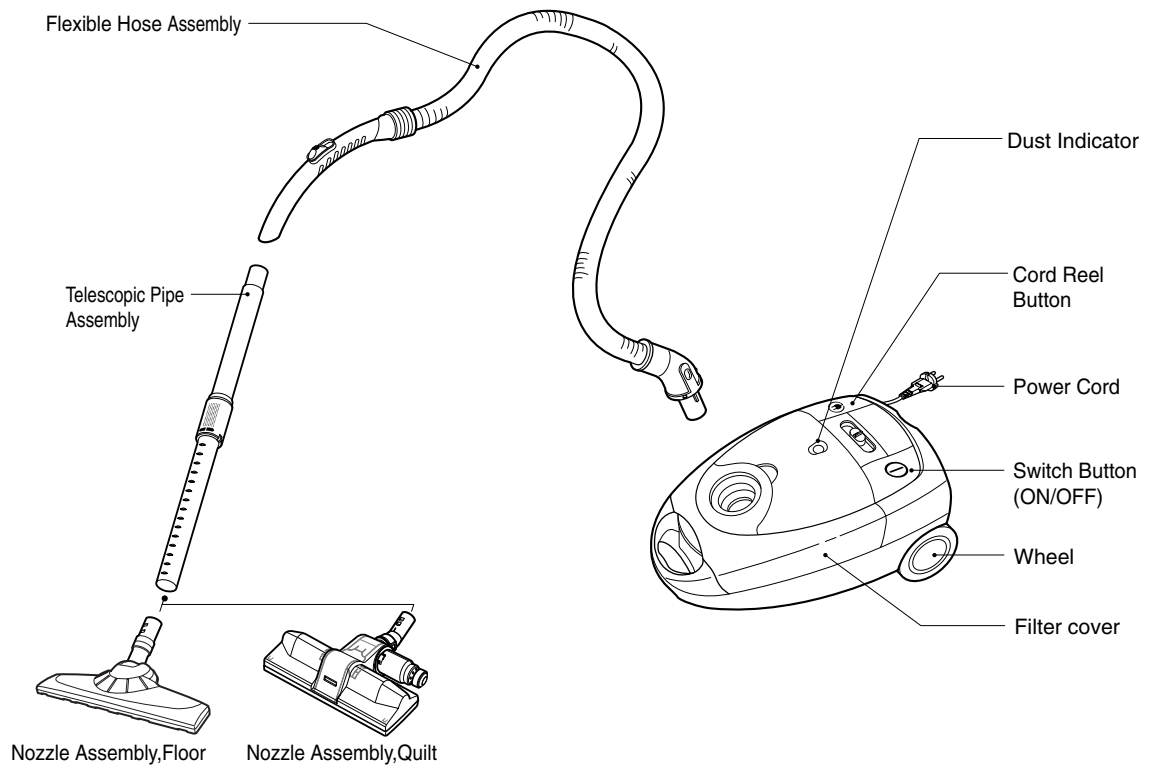
BEFORE ATTEMPTING TO SERVICE OR ADJUST ANY PART OF THE VACUUM CLEANER, DISCONNECT THE ELECTRICAL POWER SUPPLY CORD FROM THE WALL OUTLET.

1. Motor exchange

- 1) Separate the Body Cover and Body Base by unfastening the screws.
- 2) After disconnecting the lead wires, replace the old motor with a new one.

2. In case of exchanging other parts, refer to the exploded view.

DESCRIPTION



CANISTER

ATTACHMENTS



Nozzle, Crevice



Nozzle Assembly, Upholstery



Filter Assembly, Cloth

SPECIFICATIONS

- **MODEL** : REFER TO THE COVER PAGE
- **POWER SOURCE** : ON RATING PLATE
- **POWER CONSUMPTION** : ON RATING PLATE
- **POWER CONTROL** :
 - **MAIN** : SLIDE CONTROL ON BODY COVER
- **CAPACITY** : 5.3 l / 6 l
- **CORD LENGTH** : 6 m
- **NET WEIGHT** : 7.4 kg
- **PACKING WEIGHT** : 8.5 kg
- **NET DIMENSION** : 305 × 522 × 235 (W × D × H)mm

- **PACKING DIMENSION** : 358 × 577 × 370 (W × D × H)mm
- **ATTACHMENTS**
 - HOSE ASSEMBLY, FLEXIBLE1EA
 - PIPE ASSEMBLY, TELESCOPIC1EA
 - NOZZLE ASSEMBLY, FLOOR1EA
 - NOZZLE ASSEMBLY, QUILT1EA
 - NOZZLE, CREVICE1EA
 - NOZZLE ASSEMBLY, UPHOLSTERY1EA
 - FILTER ASSEMBLY, CLOTH1EA

• This specifications are subject to change according to the buyer's request.

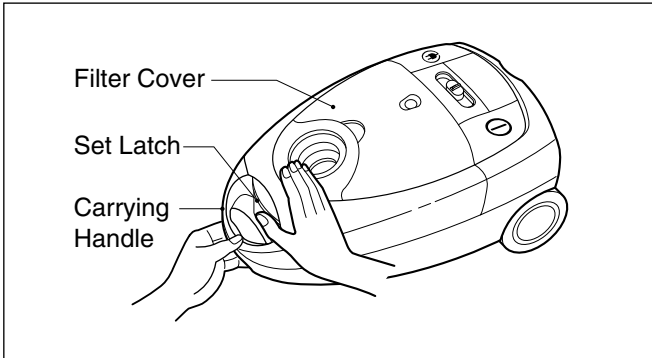
DISASSEMBLY

NOTE : Before attempting to service or adjust any part of the vacuum cleaner, disconnect the electrical power supply cord from the wall outlet.

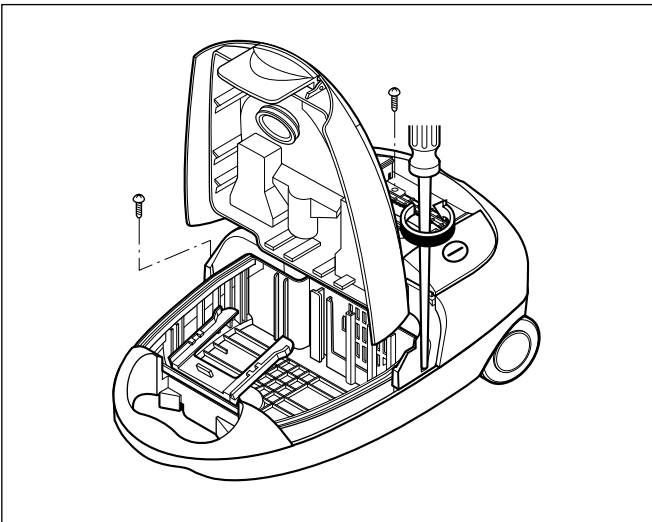
- Almost all the parts of this vacuum cleaner can be assembled with a screw driver and each connecting component easily fits each other. Disassemble one by one referring to the exploded view.
- If possible, don't disassemble except for the necessary parts. It is not necessary to disassemble the parts that are not detailed in the exploded view.

1. Body Cover Assembly Replacement

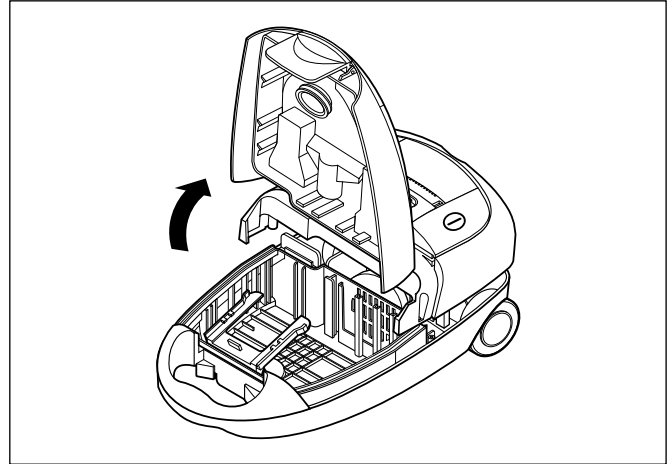
- 1) Grasp carrying handle and open filter cover by lifting latch.



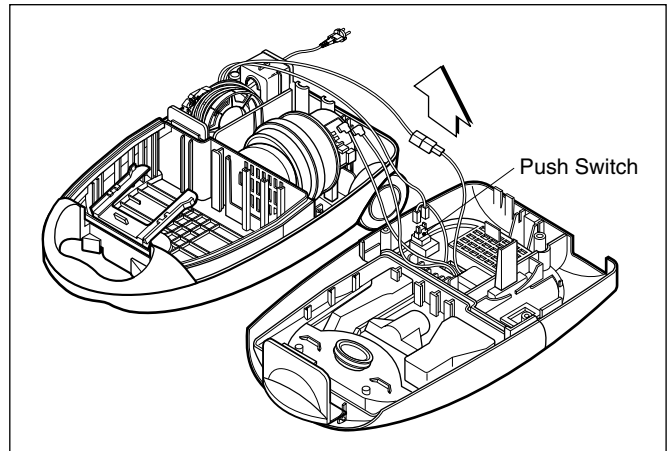
- 2) Open the filter cover and remove the two screws fastening the body base in the direction of arrow.



- 3) Lift body cover in the direction of the arrow.

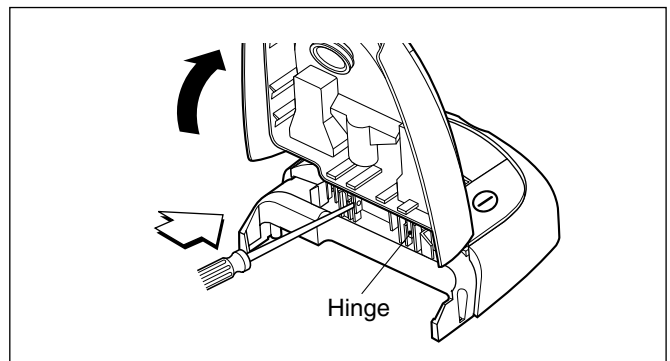


- 4) Strip off the lead wires from the push switch and others.



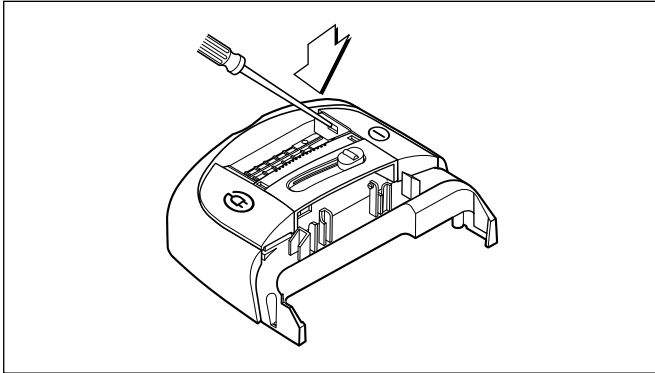
2. Filter cover assembly replacement

- 1) Push the hinge side by inserting flat screw driver in crack between hinge and body cover.

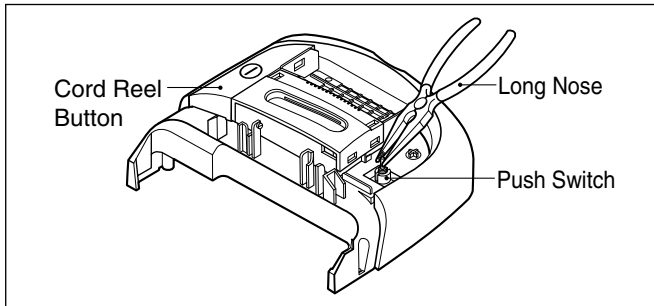


3. Push Switch Assembly Replacement

1) Push the s/w button hook in the direction of the arrow.

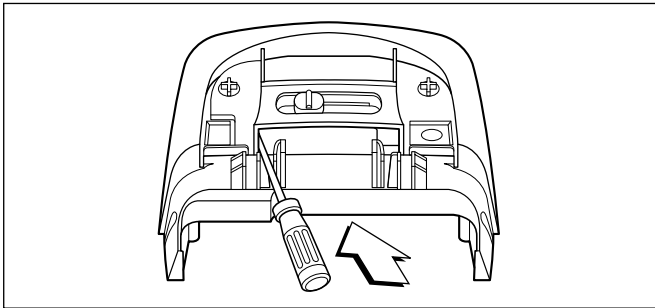


2) Push the push switch down grasping the wings of push switch by long nose.

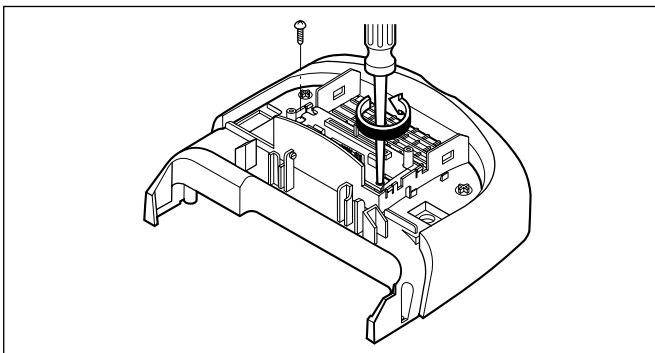


4. P.W.B Assembly Replacement.

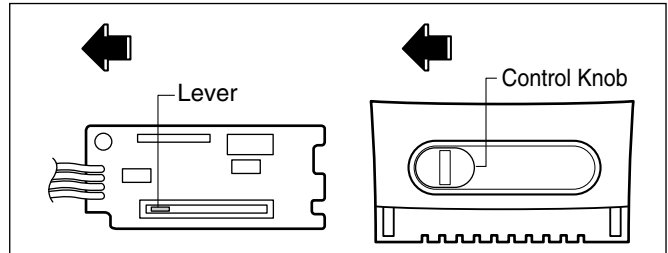
1) Push the hook carefully and take out the control cover.



2) Remove the two screws fastening the P.W.B Assembly on the body cover.

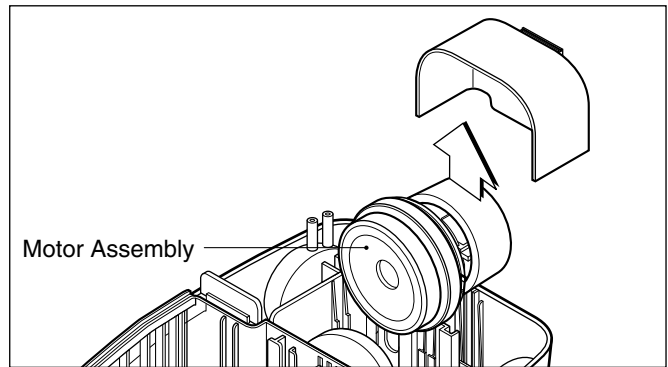


2) When reassembling, assemble after sliding the lever of P.W.B Assembly and control knob to the left side.

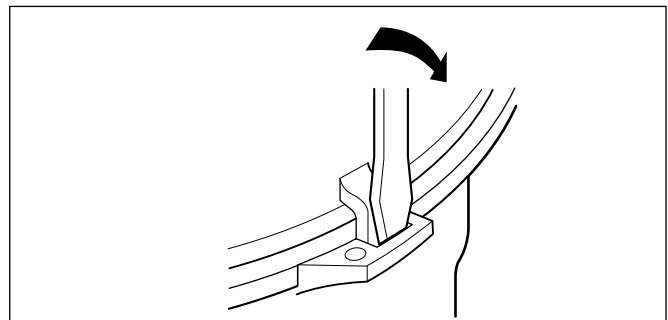


5. Motor Assembly Replacement

• Lift the motor assembly in direction of the arrow after stripping off the lead wires.

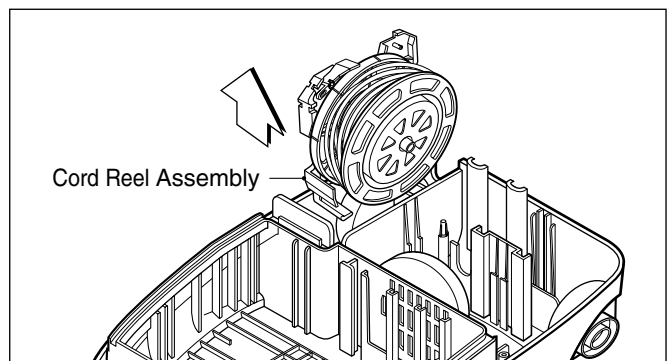


• Push the hook side by inserting flat screw driver in the direction of the arrow in case of motor case.



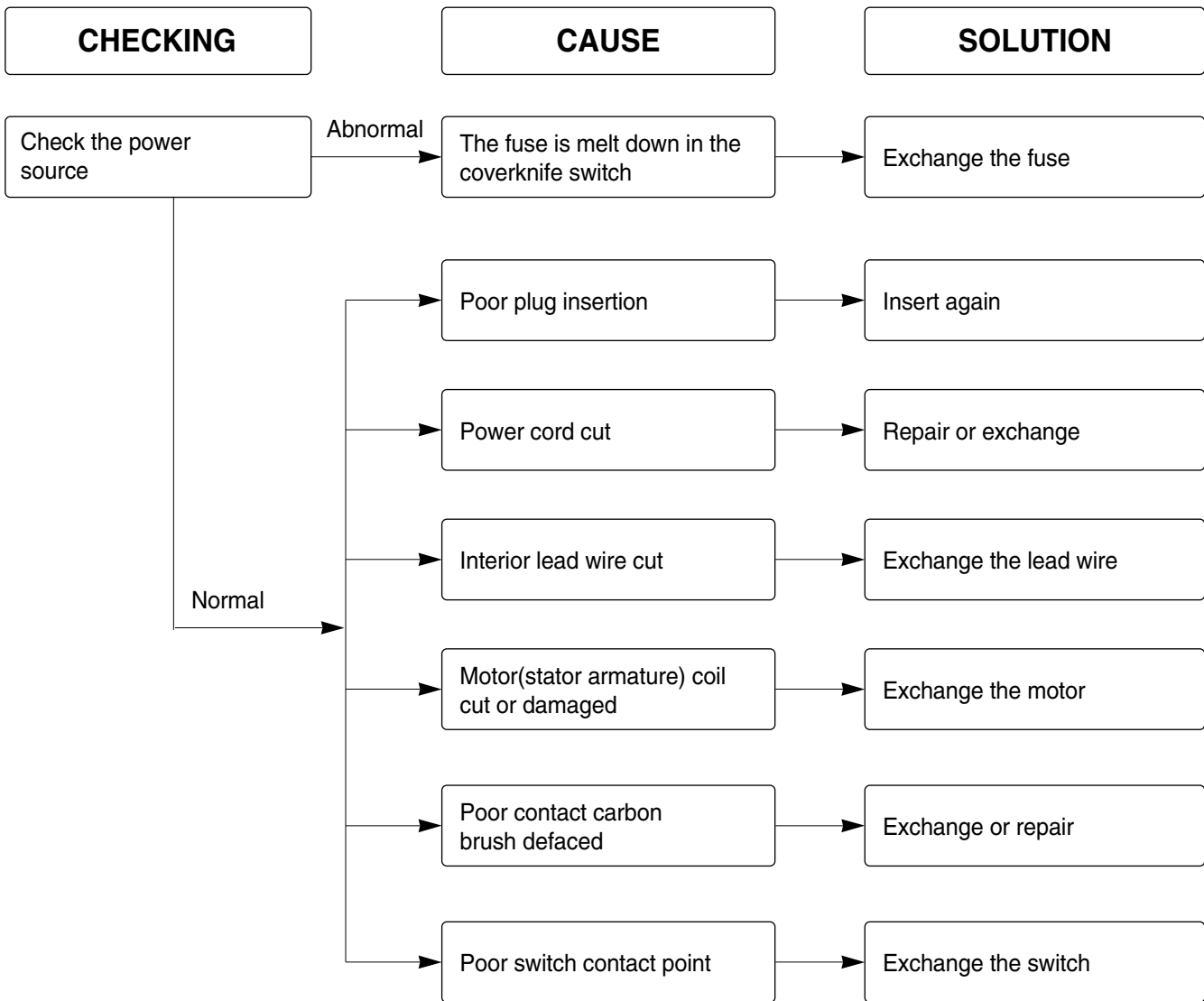
6. Cord Reel Assembly Replacement

• Lift the cord reel assembly from the body base in direction of the arrow.

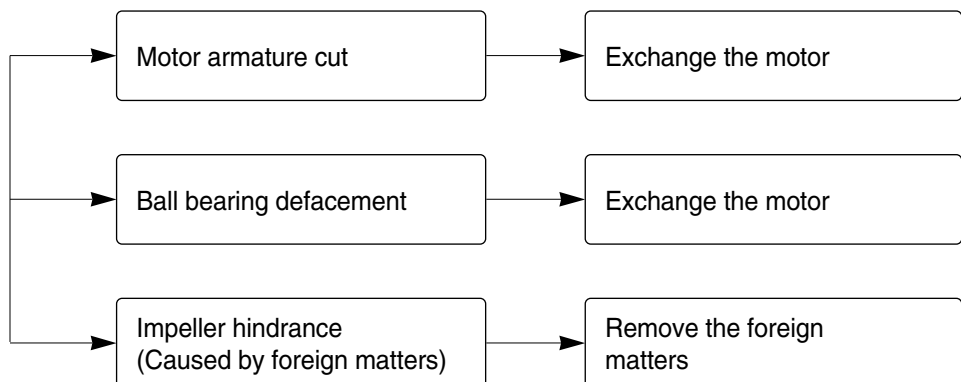


TROUBLE SHOOTING GUIDE

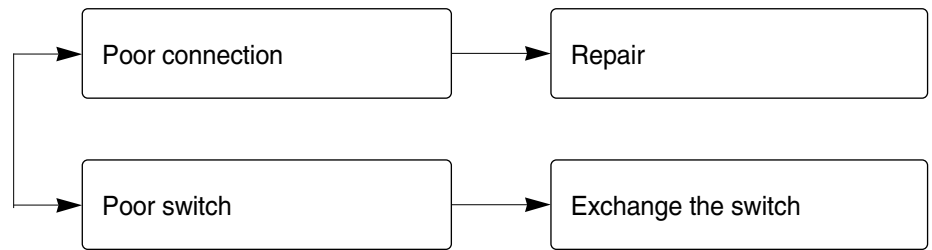
1. SWITCH ON BUT MOTOR DOES NOT TURN



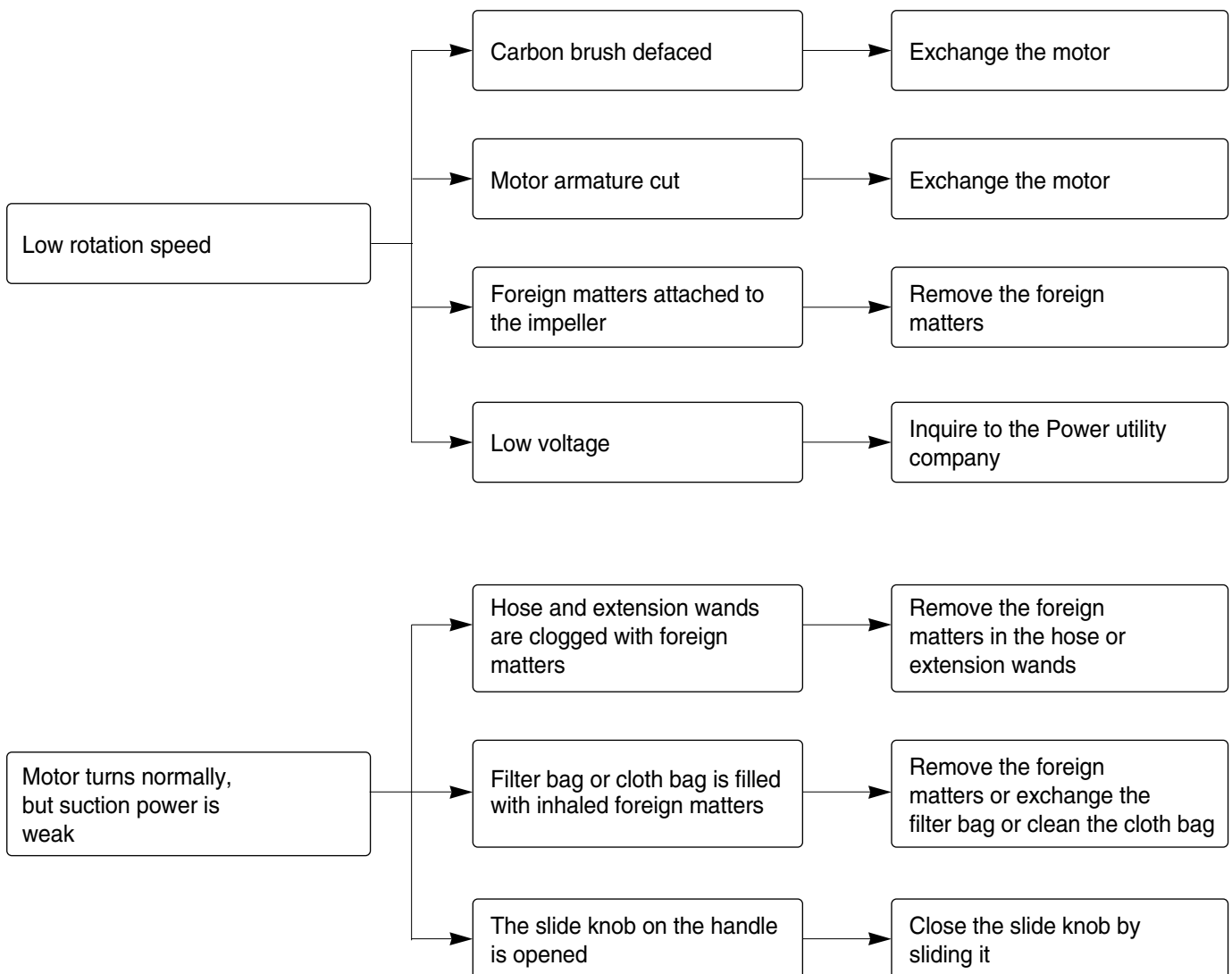
2. SWITCH ON, MOTOR DOES NOT TURN BUT BUZZES



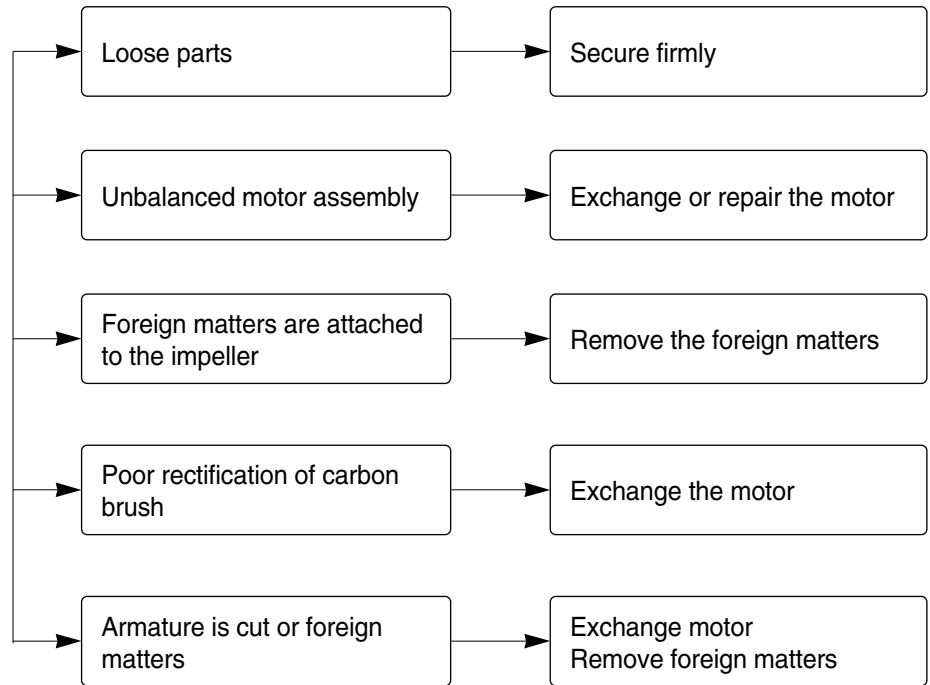
3. SWITCH OFF BUT MOTOR TURNS



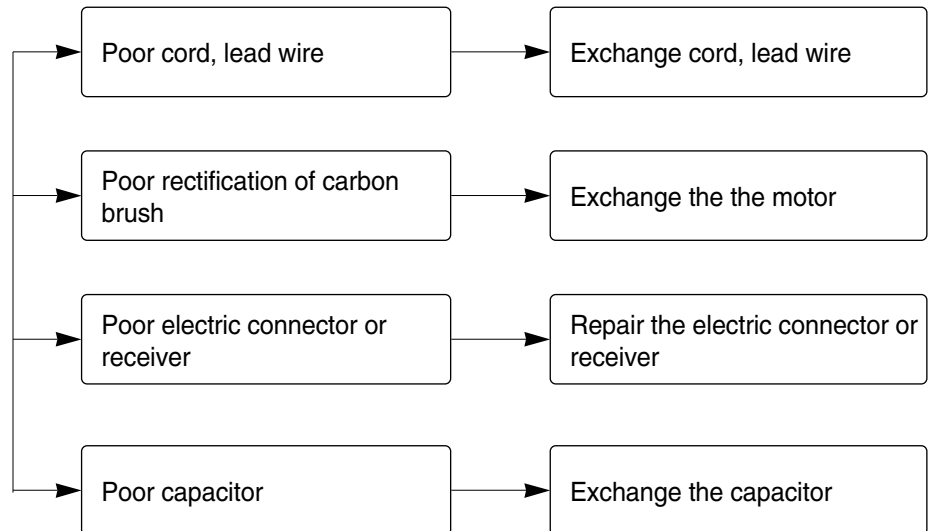
4. WEAK SUCTION POWER



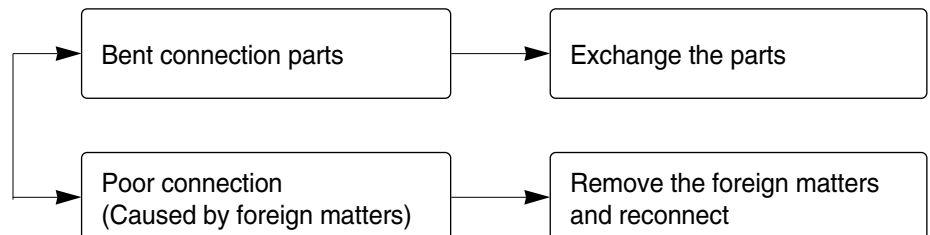
5. VIBRATION NOISES



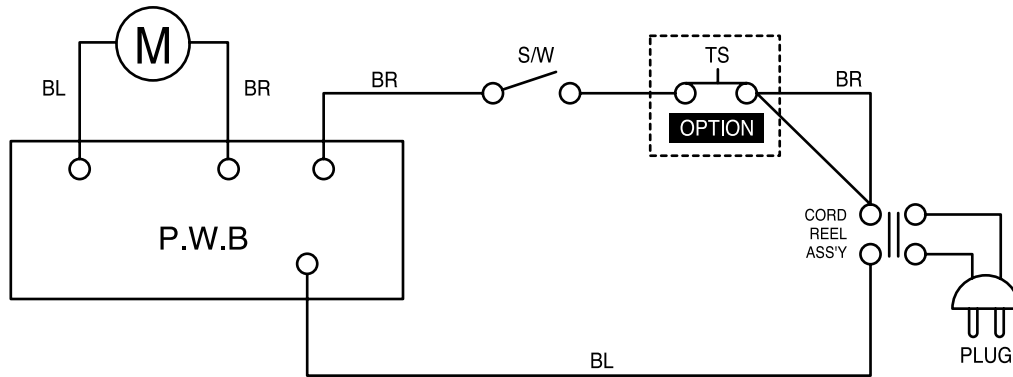
6. RADIO, TV RECEPTION DISTURBANCE



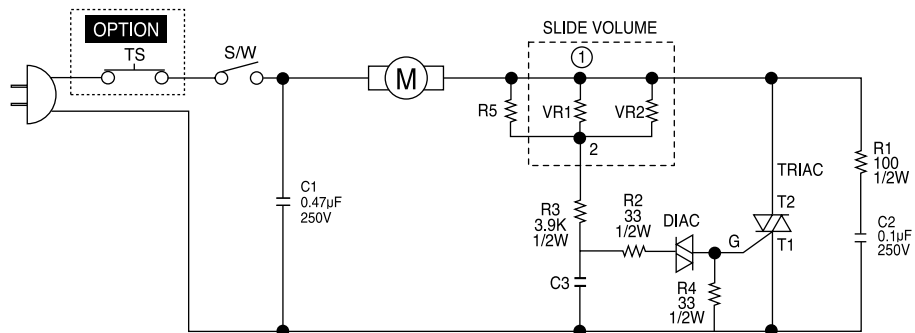
7. IMPROPER TUBE OF NOZZLE CONNECTION



SCHEMATIC DIAGRAM



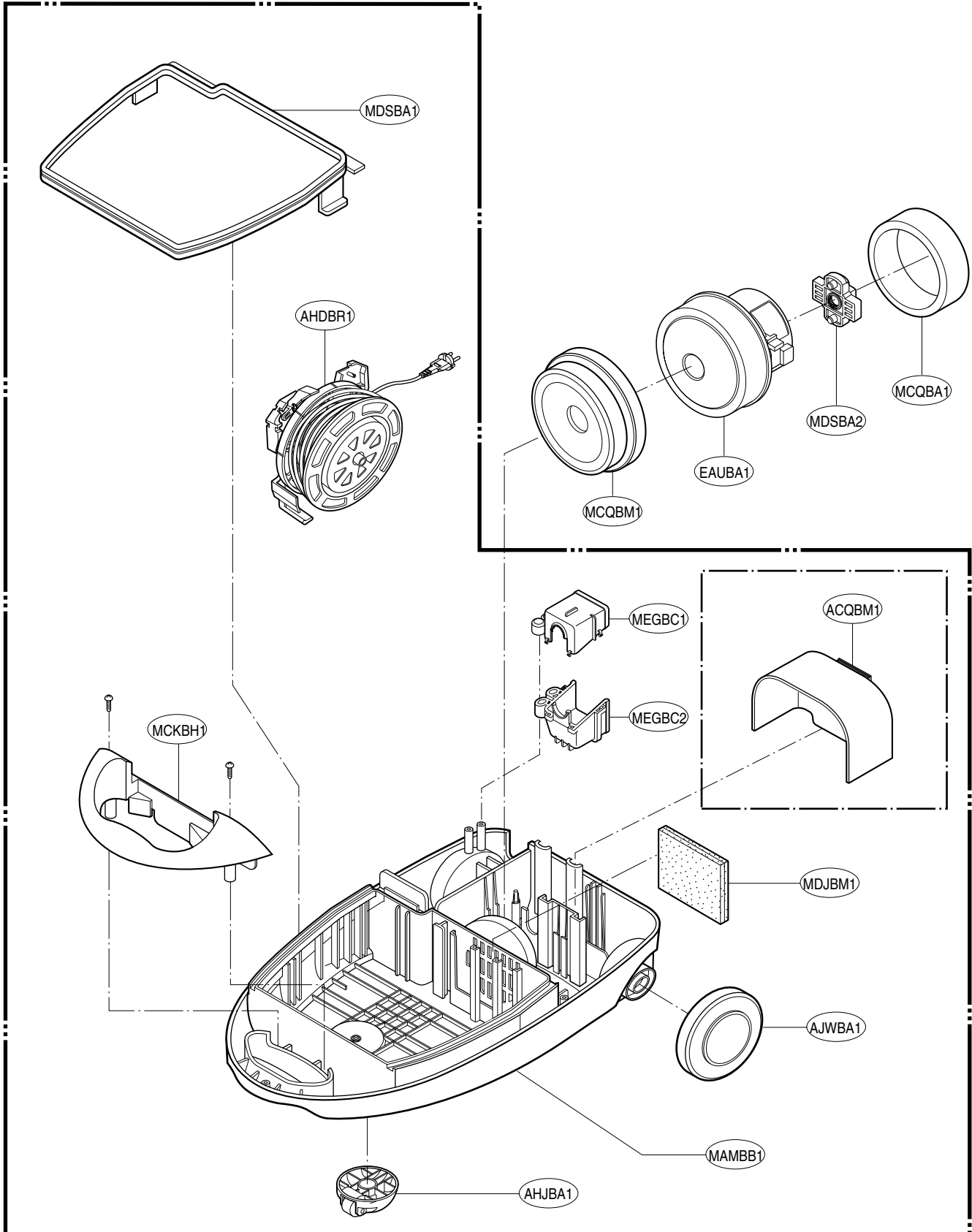
PRINTED CIRCUIT BOARD



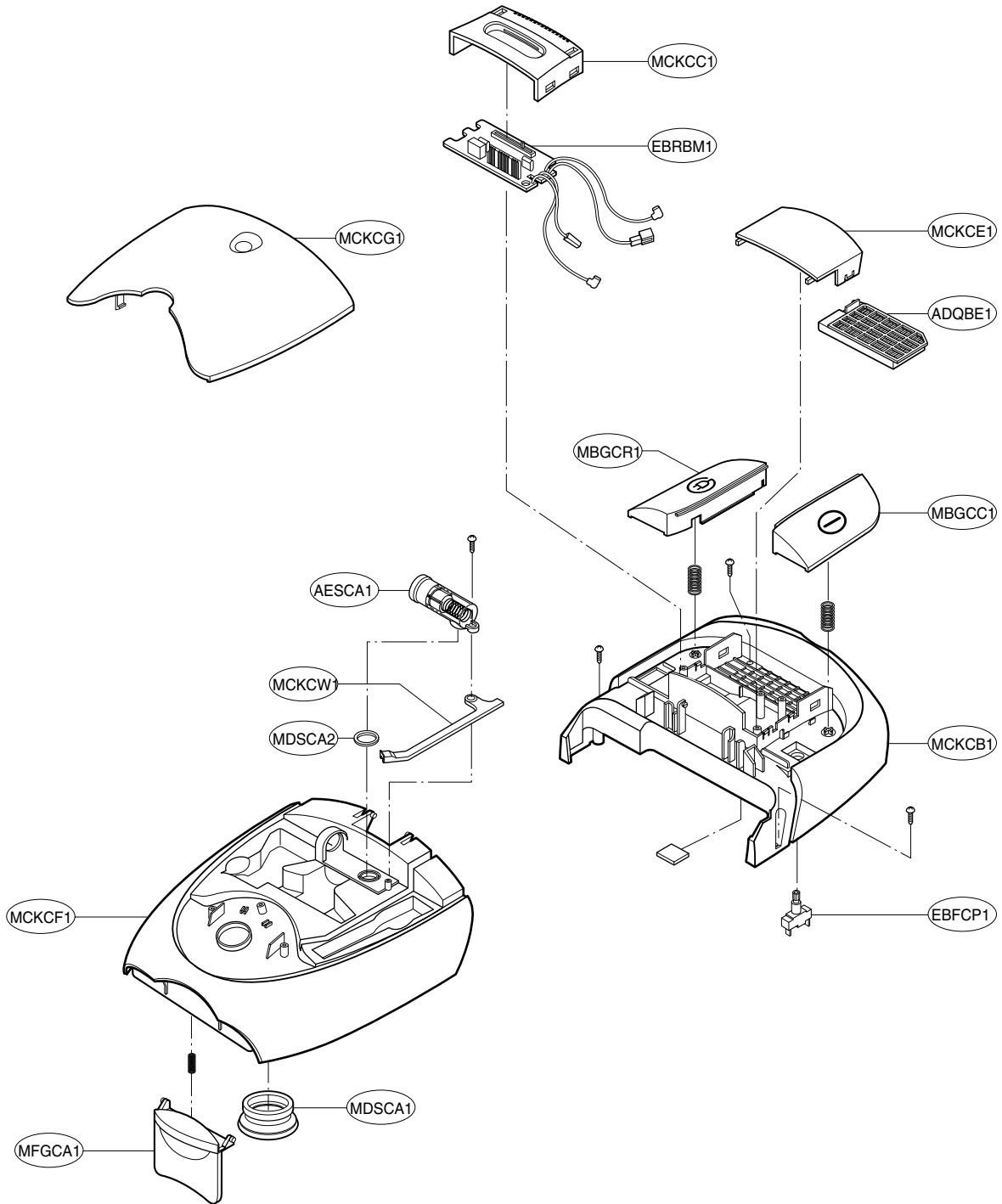
EXPLODED VIEW

BASE ASSEMBLY, BODY

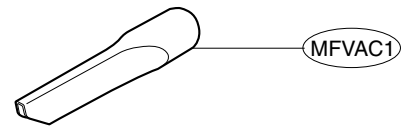
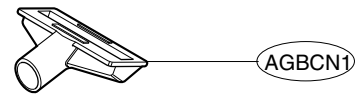
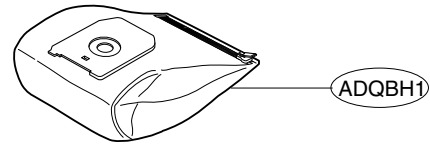
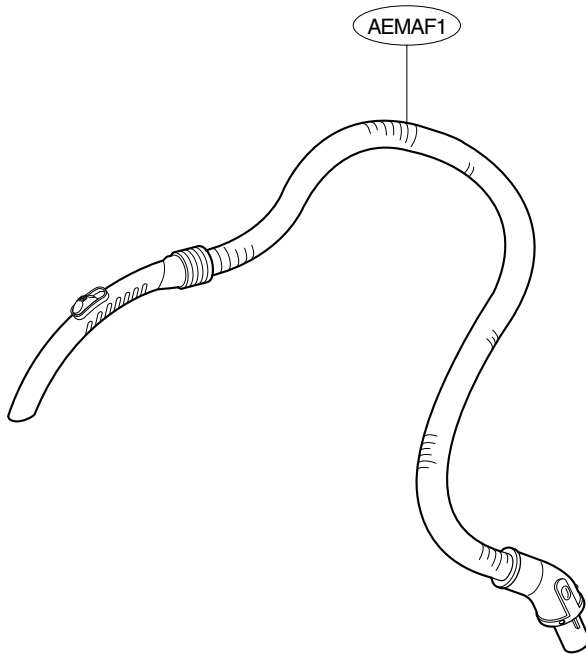
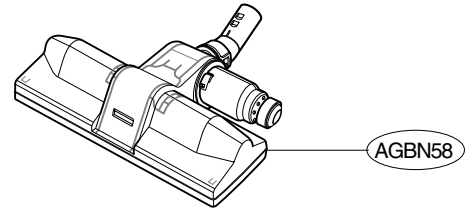
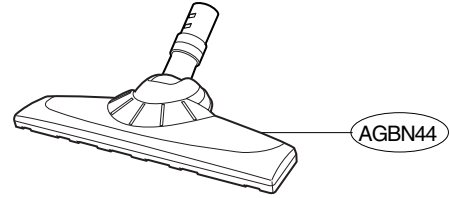
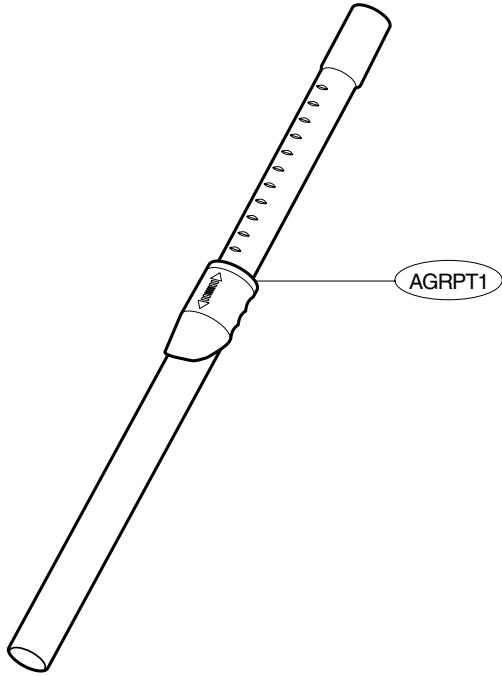
V-4800HTV(V-C4380HTV.ACPVDEI)



COVER ASSEMBLY, BODY



ACCESSORIES



REPLACEMENT PARTS LIST

LOC. NO.	PART NO.	DESCRIPTION	SVC	REMARK
ABCCB1	5203FI2068A	Brush Assembly,Dust	R	
ACQBM1	3551FI2418A	Cover Assembly,Motor	R	
ADQBE1	5231FI3772B	Filter Assembly,Exhaust	R	
ADQBH1	5231FI2444F	Filter Assembly,Cloth	R	
ADQBH1	5231FI2471B	Filter Assembly,Paper	R	
AEMAF1	5215FI1331K	Hose Assembly,Flexible	R	
AESCA1	3520FI3475F	Indicator Assembly	R	
AGBCN1	5248FI2259C	Nozzle Assembly,Upholstery	R	
AGBN44	AGB32599101	Nozzle Assembly,Floor	R	
AGBN58	5249FI1411B	Nozzle Assembly,Quilt	R	
AGRPT1	5201FI2487A	Pipe Assembly,Telescopic	R	
AHDBR1	4687FI1480Y	Reel Assembly	R	
AHJBA1	4441FI3608B	Roller Assembly	R	
AJWBA1	4660FI2417A	Wheel	R	
EAUBA1	4681FI2462A	AC Motor Assembly	R	
EBFCP1	6601FI3149B	Switch,Push Button	R	
EBRBM1	6871FX2123C	PCB Assembly,Main	R	
MAMBB1	3040FI1463A	Base,Body	R	
MAY000	3890FG1234A	Box,Color	R	
MBGCC1	5020FI2340C	Button,Control	R	
MBGCR1	5020FI2341C	Button,Cord Reel	R	
MCKBH1	3550FI1633C	Cover,Handle	R	
MCKCB1	3550FI1620A	Cover,Body	R	
MCKCC1	3550FI2535A	Cover,Control	R	
MCKCE1	3550FI1632C	Cover,Exhaust Filter	R	
MCKCF1	3550FI1621C	Cover,Filter	R	
MCKCG1	3550FI1622C	Cover,Accessory	R	
MCKCW1	3550FI3820A	Cover,Wire	R	
MCQBA1	3940FI3646A	Damper,Absorbing	R	
MCQBM1	3920FI2416A	Damper,Motor Mount	R	
MDJBM1	5231FI4518E	Filter,Motor Safety	R	
MDSBA1	3920FI1278A	Gasket	R	
MDSBA2	3920FI3775A	Gasket	R	
MDSCA1	4036FI4074A	Gasket	R	
MDSCA2	4036FI4334C	Gasket	R	
MEGBB1	3500FI2238D	Holder,Bag	R	
MEGBC1	4930FI2442A	Holder,Cord	R	
MEGBC1	4930FI3791B	Holder,Cord	R	

R : SERVICE PARTS

LOC. NO.	PART NO.	DESCRIPTION	SVC	REMARK
MEGBC2	4930FI2441A	Holder,Cord	R	
MEGCH1	4930FI2459B	Holder,Suction Pipe	R	
MFGCA1	4026FI2412C	Locker	R	
MFL552	3828FI2844B	Manual,Owners	R	
MFVAC1	5058FI3584A	Nozzle,Crevise	R	

R : SERVICE PARTS

