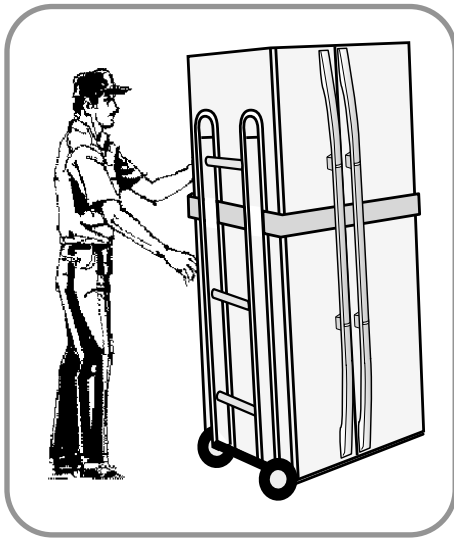


### 3. INSTALLATION



#### 1) To protect refrigerator in movement

Use padded hand truck as shown. If entrance width is less than 30", remove doors prior to installation and reattach doors according to procedure below.

#### 2) Remove all protective tape and pad in refrigerators.

Please adjust the clearance between the doors.

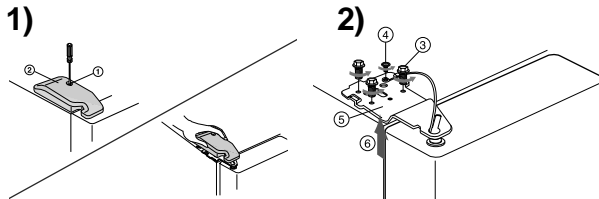
#### 3) Set the temperature control to the temperature and wait for an hour.

The refrigerator should get slightly chilled and the motor runs smoothly.

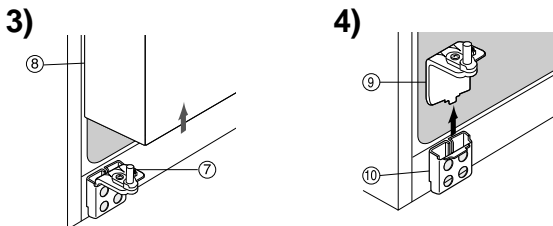
#### 4) Once the refrigerator temperature is sufficiently cool

You can store food in the refrigerator. After starting the refrigerator, it takes a few hours to reach the appropriate temperature.

#### • Disassemble the refrigerator

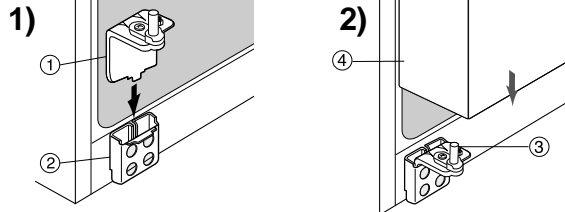


- 1) With the door closed, disassemble screw (1) by using (+) screw driver and then disassemble the upper hinge cover (2).
- 2) Disassemble bolts (3) and screws (4) to the counter-clockwise by using a tool, and take off the upper hinge (5) along the arrow (6). Take care when you disassemble the door to ensure that it does not fall on you.

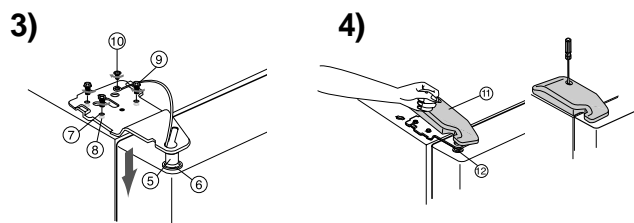


- 3) Disassemble the door from the lower hinge (7) by lifting the door (8).
- 4) Disassemble the lower hinge (9) from the bracket lower hinge (10) by lifting the lower hinge (9) in the direction of the arrow.

#### • Assemble the refrigerator



- 1) Insert the lower hinge (1) in the bracket lower hinge (2).
- 2) Assemble the door (4) in the lower hinge (3).



- 3) Insert the upper hinge shaft (5) into the hole (6). After leveling between the upper hinge hole (7) and the hole of the refrigerator (8), assemble bolts (9) and screws (10) to the clockwise by using a tool.
- 4) Put the front part of the upper hinge cover (11) on the front part of the upper hinge (12) and assemble, starting with the front part of the upper hinge cover. Assemble the screw to the clock wise by using a tool.